



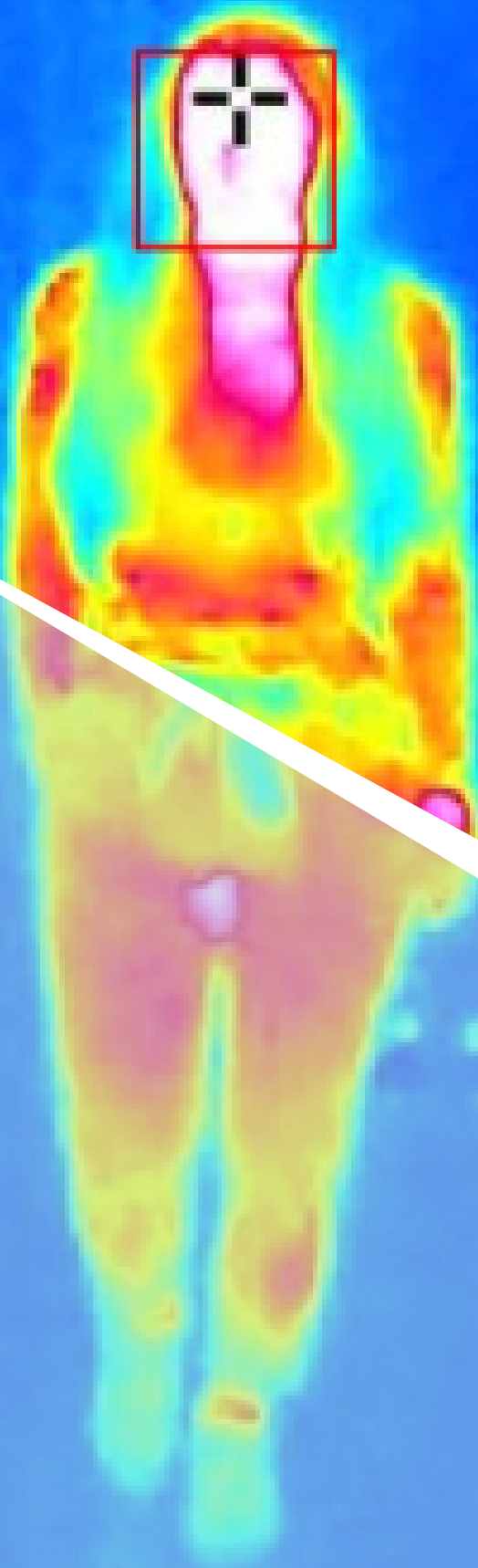
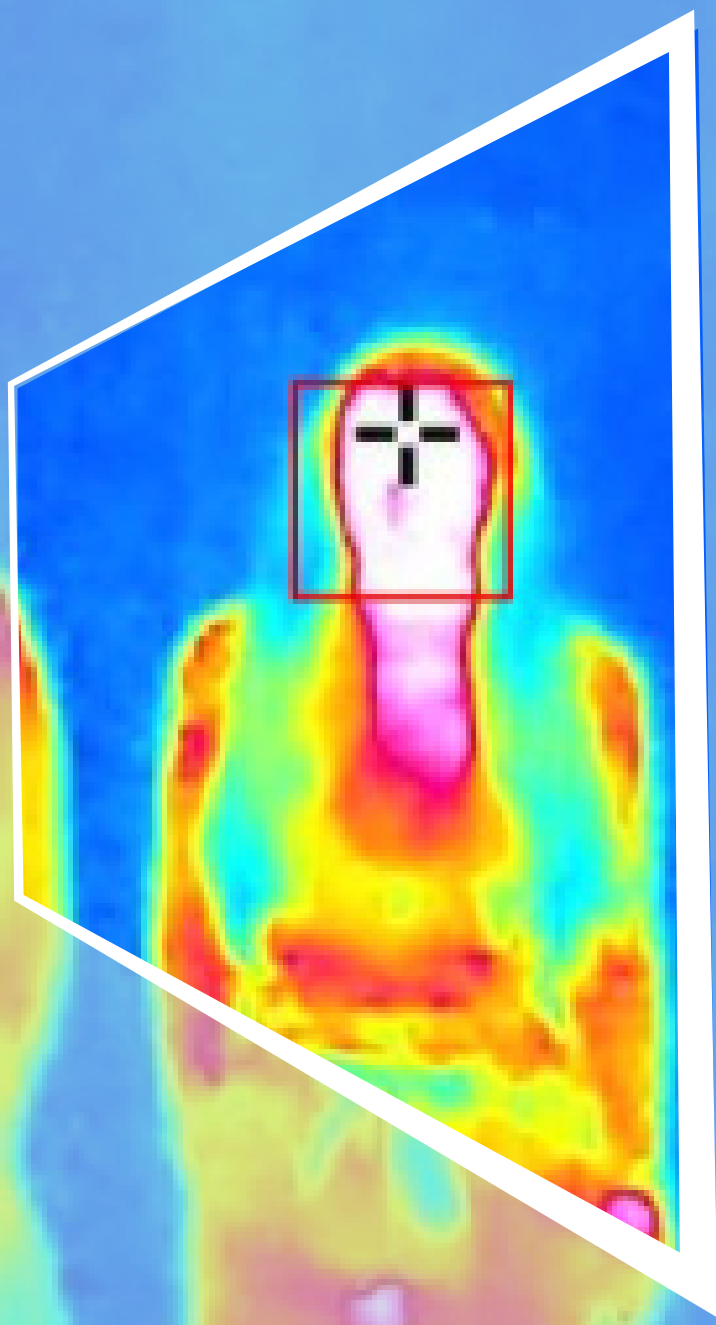
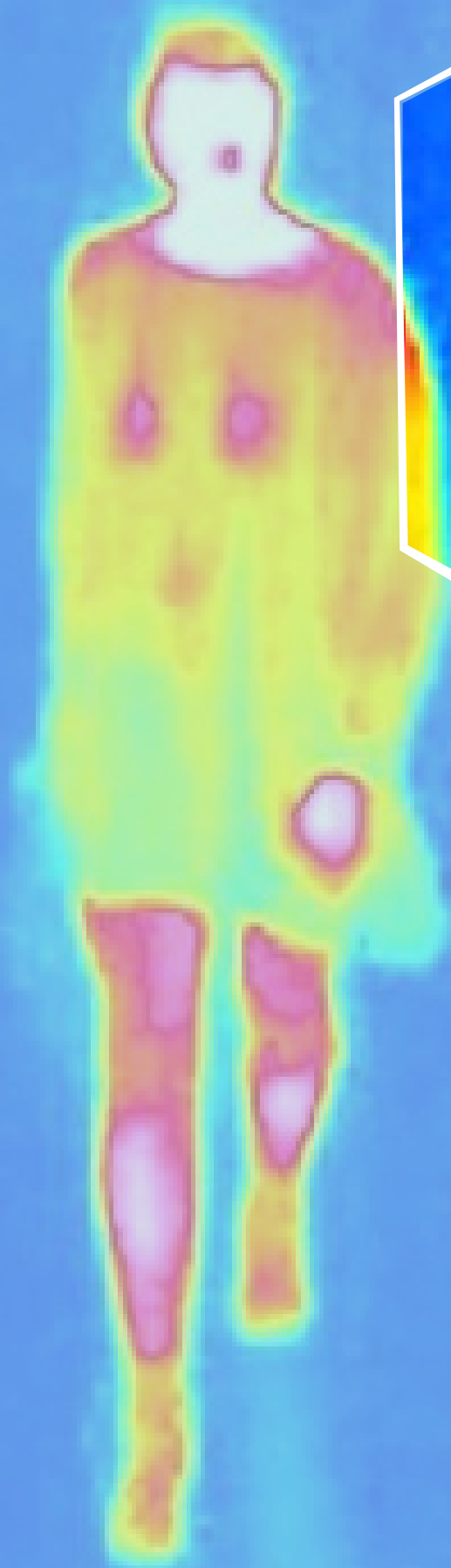
KONICA MINOLTA



# **INTELLIGENT VIDEO SOLUTIONS**

**SMART SOLUTIONS FOR  
EFFECTIVE MONITORING  
AND PROTECTION**

Giving Shape to Ideas





KONICA MINOLTA



# DISCOVER THE HORIZON

Konica Minolta Intelligent video and data solutions combine visual, thermal, sound and sensor data to better protect your environment. With a reputation for being the most robust cameras in the industry, these highly durable, IoT-enabled devices deliver exceptional image quality and data analysis ...

### THERMAL CAMERAS

Heat mapping, thermal detection, monitoring machinery temperature, preventative monitoring, food and manufacturing

### ACCESS CONTROL

Facial recognition, secure area protection, license plate recognition

### IMAGE & PROCESS MONITORING

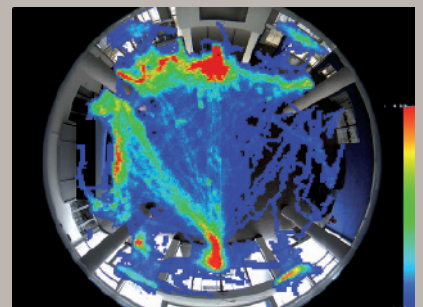
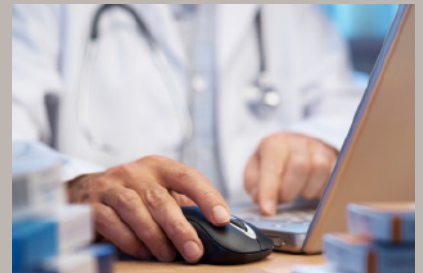
People counting, queue monitoring, patient activity, object counting, behavioural detection, intelligent Information management

### SURVEILLANCE CAMERAS

Security, mobile surveillance, site protection, public area security, prevention of vandalism and theft

A Konica Minolta intelligent video solution delivers:

- Reliable coverage and high quality evidence
- Durability: no moving parts that can break
- Reliability: outstandingly low failure rate
- No blind spots: 360 hemispherical or 180 degree panoramic views
- Efficiency: low power consumption; fewer cameras with greater coverage
- Reduced liability: documentation and evidence of events with high image quality
- Predictability: event triggering to prevent breaches
- Security: encrypted transmission guarantees data security



Giving Shape to Ideas



KONICA MINOLTA

# WORLD LEADING INNOVATION AND QUALITY



## QUALITY AND RELIABILITY

Built in Germany with a focus on engineering excellence, our futureproof devices offer industry leading reliability, tested against the International Electrotechnical Commission (IEC) standards. With lowest in class energy consumption and mean-time-before-failure average (MTBF) of over 8 years of continual use, our devices offer extended value through proven design, quality component and extensive quality control all combined with intelligent data analysis and workflow optimisation.

Unlimited scalability, in terms of number of cameras and users, ensures Konica Minolta's Intelligent Solutions can be deployed in some of the most demanding environments such as prisons, airports and sports stadiums. Professional VMS and video analysis come as standard, and free software updates ensures your intelligent camera solution will continue to meet your needs in the future.



## END-TO-END CYBER SECURITY

With the rise of IoT-enabled devices, all our hardware and software is independently and continually tested by third party digital security experts to ensure proven protection against cyberattacks. By maintaining software development and testing in-house in our secure facility in Germany, Konica Minolta intelligent video solutions lead the industry in cybersecurity for video surveillance ecosystems.

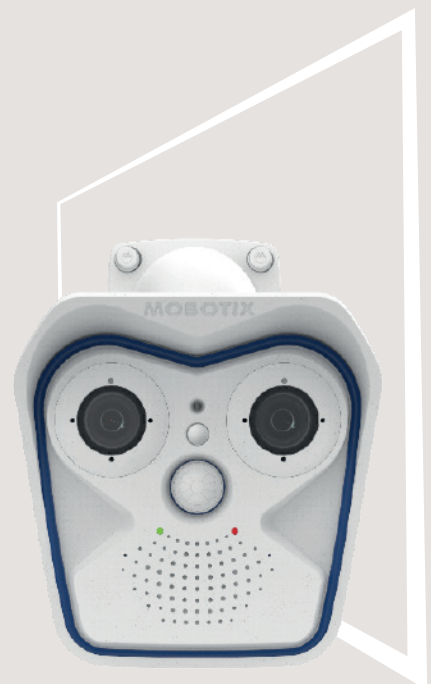
Protect yourself against cyberattacks with increased network security and a protected zone of privacy.

## INNOVATIVE, DECENTRALISED APPROACH

Our innovative, decentralised concept allows you to protect larger areas using fewer cameras. Our decentralised system platform uses comparatively little computing power, so it is far more cost-effective and easier to scale in size than traditional, centralised systems. As more devices are added, you only need to add more storage. No dedicated servers or recording software licenses are required. This cost-effective, low-maintenance solution saves customers both upfront and over the life of the system.

## WORLD'S FIRST SELF-MANAGING CAMERA

The first product released was an IP camera with recording and DVR management technology built-in. It was a world-first. This decentralised approach was so revolutionary, it changed the video surveillance industry forever. Because the camera was completely self-managing, expensive central recording systems were, for the first time, no longer required.



Giving Shape to Ideas



KONICA MINOLTA

**“THE VIDEO SOLUTION HAS ENABLED US TO SECURE OUR MAIN ROUTES LIKE GATES AND ACCESS CORRIDORS TO CLASS ROOMS AS WELL AS TO CONTROL EXTERNAL VISITORS MUCH BETTER. PUPILS WERE INFORMED ABOUT THIS SECURITY SOLUTION AND FELT MUCH SAFER AFTER INSTALLATION AND SETUP”**

éryl Gondouin  
Collège Épiscopal, France



Giving Shape to Ideas



KONICA MINOLTA



# INDUSTRIES

## MANUFACTURING

Intelligent process monitoring can reliably detect dangers before they occur. Critical infrastructure of energy generation systems, communications systems and utilities needs to be separately secured and monitored for reliable operation, and not only for emergency situations. High follow-up costs caused by damage, repairs and power outages can be prevented if intelligent preventive measures are taken in advance.

## RETAIL

Billions of pounds are lost every year as a result of annual inventory differences in the retail sector, due to factors such as theft and fraud. The



use of intelligent video security is becoming more important for retailers, and the increasing investment in preventive and security measures reflects this. However, modern IP video solutions can supply much more than only evidence theft prevention, providing additional insight into brand preference and footfall traffic areas.

## EDUCATION

Education institutions are responsible for ensuring the safety of its students and staff, as well to protect its facilities from vandalism and theft. Konica Minolta's intelligent video solutions provide site security and protection, as well as behavioural monitoring and heat mapping to identify high traffic areas. Access control solutions using the latest technologies provide further peace of mind.

## HEALTH CARE

Konica Minolta's intelligent video solutions can be used to effectively monitor anything from critical facilities such as laboratories,



emergency rooms, psychiatric departments and other restricted areas to simple entrance, lobby, visitor and parking spaces. Typical scenarios are persons leaving a room or a bed during the night, how often lights are turned on as well as the control of heat and room temperature. Information from biomedical sensors & devices can also be captured and displayed in real time to notify care providers.

## TRANSPORT AND MOBILITY

More than ever, operators of public and private transportation services and commercial transport vehicles must take action against vandalism, theft and violence being perpetrated within and against their vehicles. Those companies take these measures to ensure that their guests feel safe. Konica Minolta's intelligent video solutions offer a decentralised, intelligent video security technology that perfectly suits these requirements.



KONICA MINOLTA

**“FROM SECURE VIDEO SURVEILLANCE, SITUATION ANALYSIS TO ACCESS CONTROL SOLUTIONS, WE PROVIDE A RANGE OF COST-EFFECTIVE SOLUTIONS FOR PUBLIC SECTOR ORGANISATIONS”**



**LOCAL AUTHORITIES AND PUBLIC OFFICES**

Ensuring the safety of citizens and public sector workers is a key priority across government offices and public spaces. Our intelligent video solutions are able to withstand extreme weather, scale quickly and easily and provide excellent image quality even in low light conditions. From secure video surveillance, situation analysis to access control solutions, we provide a range of cost-effective solutions for Public Sector organisations.

**HOSPITALITY AND LEISURE**

Safeguarding visitors and staff against violent or abusive behaviour, as well as delivering an efficient service to customers are just some of the challenges organisations are facing. From secure surveillance and behavioural monitoring to prevent incidents from escalating, to queue monitoring, heat mapping and fraud detection, our intelligent video solutions can help.



**Giving Shape to Ideas**



# OUTDOORS

## M16 / THERMAL



- Mx6 system platform with H.264 and ONVIF compatibility
- Fixed premium thermal image sensor with an NETD of 50 mK
- Three field of view variants: 45°, 25° or 17°
- Additional image sensor module options
- Recording on an internal MicroSD card (4GB as standard)
- Integrated microphone and speaker
- MxActivitySensor can also be used in total darkness
- PoE thermal camera with a max. power consumption of 8 W

## D26



- Mx6 system platform with H.264 and ONVIF compatibility
- Recording on an internal MicroSD card (4 GB as standard)
- Available in day or night variants (6MP color or B&W sensor)
- Large selection of lenses with viewing angles from 15° to 103°
- Equipped with shock detector and MxAnalytics as standard
- Weatherproof and shock-resistant housing (IP66, IK10)
- Accessories for ceiling installation and vandalism protection

## Q26



- Mx6 system platform with H.264 and ONVIF compatibility
- Recording on an internal MicroSD card (4 GB as standard)
- Available in day or night variants (6MP color or B&W sensor)
- Equipped with shock detector and MxAnalytics as standard
- Weatherproof and shock-resistant housing (IP66, IK10, -40 to 50°C (-40 to 122°F))
- Suitable for installation on ceilings, walls or poles
- Optional vandalism protection made of stainless steel

## M26



- Mx6 system platform with H.264 and ONVIF compatibility
- Recording on an internal MicroSD card (4 GB as standard)
- Integrated microphone and speaker
- Large choice of lenses with viewing angles from 8° to 180°
- MxAnalytics Video Analysis tools as standard
- Integrated temperature sensor
- Weatherproof, fiber-glass reinforced external housing (IP66, IK10)
- Suitable IR illuminator (PoE+) available as an option

## S16



- Mx6 system platform with H.264 and ONVIF compatibility
- Recording on an internal MicroSD card (4 GB as standard)
- Diverse installation options and mounting accessories for sensor modules
- Max. length of each sensor module cable: 3 m
- Microphone can be used in sensor module
- Additional microphone and speaker connections
- Integrated shock detector
- Weatherproof and robust camera housing (IP66, IK06)

## V16



- Mx6 system platform with H.264 and ONVIF compatibility
- Recording on an internal MicroSD card (4 GB as standard)
- Integrated microphone and speaker
- All S16 camera module connectors can be used
- With either one or two 6MP sensor modules (day/night)
- Integrated shock detector
- Weatherproof and robust camera housing (IP66, IK10+)





# INDOORS

## C26



- Mx6 system platform with H.264 and ONVIF compatibility
- Recording on an internal MicroSD card (4 GB as standard)
- For ceiling or corner installation, optional on-wall set
- MxAnalytics Video Analysis tools as standard
- Variants with audio package (microphone and speaker)
- Integrated vibration and temperature sensor
- As easy to install as a spotlight

## V26



- Mx6 system platform with H.264 and ONVIF compatibility
- Recording on an internal MicroSD card (4 GB as standard)
- Easily installed in the ceiling, optionally available with on-wall set with audio
- Heightened manipulation protection through optional vandalism set
- Manually adjustable lens tilt angle of 0° to 90°
- MxAnalytics Video Analysis tools as standard
- Integrated vibration and temperature sensor

## DOOR STATIONS

Hemispheric Video Technology forms the core of this high-resolution IP Video Door Station, which can seamlessly record the entire entry area thanks to a 360° fisheye lens. When the doorbell rings, a video connection is established to a remote station anywhere in the world for two-way communication and opening of the door. The modular system enables the door to be opened securely without a key via an access code, RFID transponder and smartphone.

Thanks to intelligent video analysis, the Door Station registers suspicious movements and sounds and begins recording automatically to collect evidence and document the incident, while at the same time sending a message to residents or a security company. Individual access solutions of all sizes can be implemented simply and affordably thanks to the IP standard by combining multiple Door Stations, cameras and additional devices.

## I26



- mx\_img\_i26\_180\_WallMount\_PersRE Mx6 system platform with H.264 and ONVIF compatibility
- Recording on an internal MicroSD card (4 GB as standard)
- Optimized for wall installation as an in-wall or on-wall solution
- MxAnalytics Video Analysis tools as standard
- Variants with audio package available (microphone and speaker)
- Integrated vibration and temperature sensor

## MOVE RANGE



In addition to the decentralised IoT camera program, Konica Minolta also offers the classic centrally managed MOVE camera series. This includes three different camera types in several detail versions: PTZ speedDome cameras, bullet cameras and dome cameras. These thoroughly weatherproof, high-quality IP cameras are equipped with the latest standard functions of centralised video systems, such as integrated infrared lighting, automatic day/night switching with a mechanical IR blocking filter, Wide Dynamic Range and High Speed PTZ.

## NAS

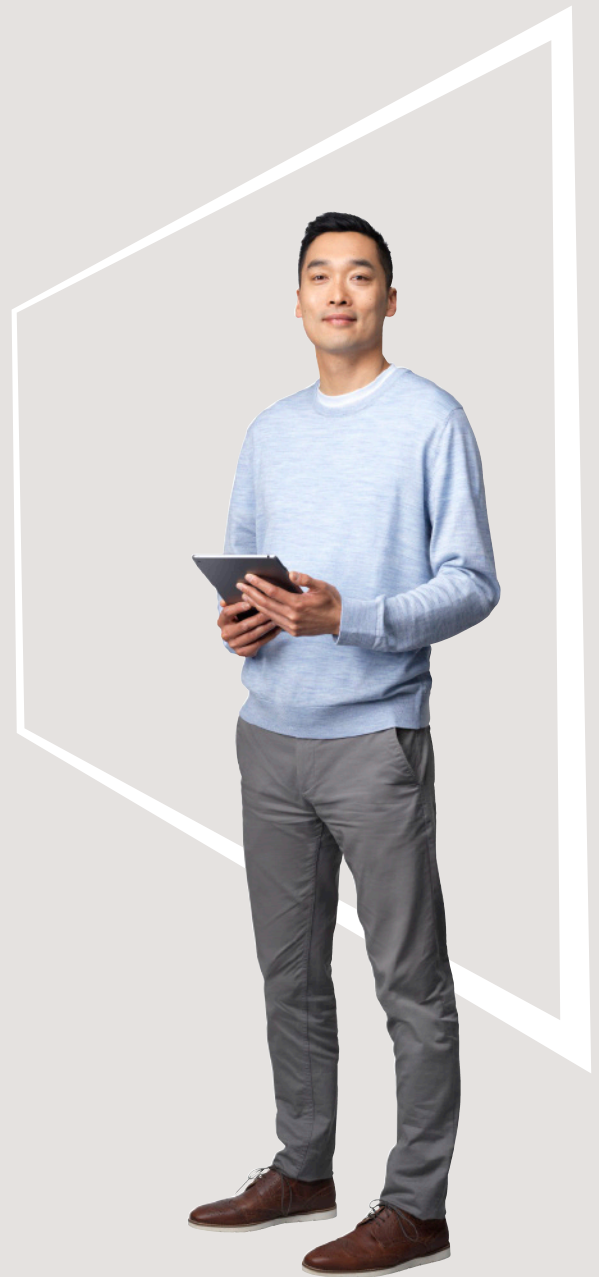
Perfect device to store images from our IoT cameras, MOVE cameras and ONVIF-S based IP cameras. Through our VMS (MxMC 2.0 and higher) the user can playback all recording of the MxNAS including the ONVIF-S footage. A highly efficient complete solution with secure data storage from a single source, which now allows decentralised and centralised video components to be easily combined.

## INTERFACE BOXES

Protect your cameras from damage caused by electrical surges, connect additional sensors and I/O devices or use the GPS signal as a precise time source and for tracking functions. The compact, weatherproof interface boxes, with a width of just around 8 cm, are extremely practical and affordable.



KONICA MINOLTA



## LET'S TALK

[Intelligentvideo@konicaminolta.co.uk](mailto:Intelligentvideo@konicaminolta.co.uk)

**Konica Minolta Business Solutions**, Miles Gray Road, Basildon, Essex, SS14 3AR  
[info@konicaminolta.co.uk](mailto:info@konicaminolta.co.uk) | [www.konicaminolta.co.uk](http://www.konicaminolta.co.uk) | 0800 833864

Giving Shape to Ideas